



05 / 18



Das Original

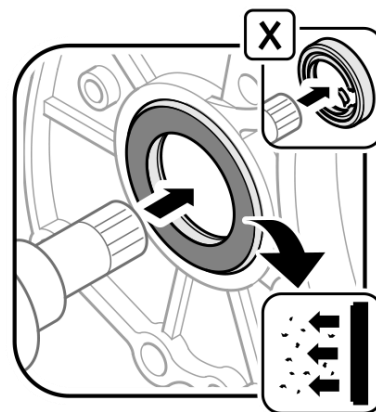
## Radial shaft seal, transmission output Citroën / Peugeot






Das Original **504.581 / 505.090 / 128.240 / 128.250**

With some radial shaft seals located on the transmission output side a plastic disc/ring is inserted in front of the actual sealing lip.

This disc acts as protection when the drive shaft is installed and prevents the penetration of dirt and foreign bodies during operation. This is essential due to the fact that the region is exposed, i.e., no pulley or gears/cogwheels are positioned in front of the seal.



The image shown is for illustrative purposes only ( 505.090).

The seals 504.581, 128.240, and 128.250 have a slightly different design (color/shape), but the protective disc/ring has the same function.

**These protective rings are located on the exterior and must not be removed prior to or during installation!**

The replacement of the radial shaft seal must be performed with suitable equipment.

01/01